

(3/4) – Allegro 160

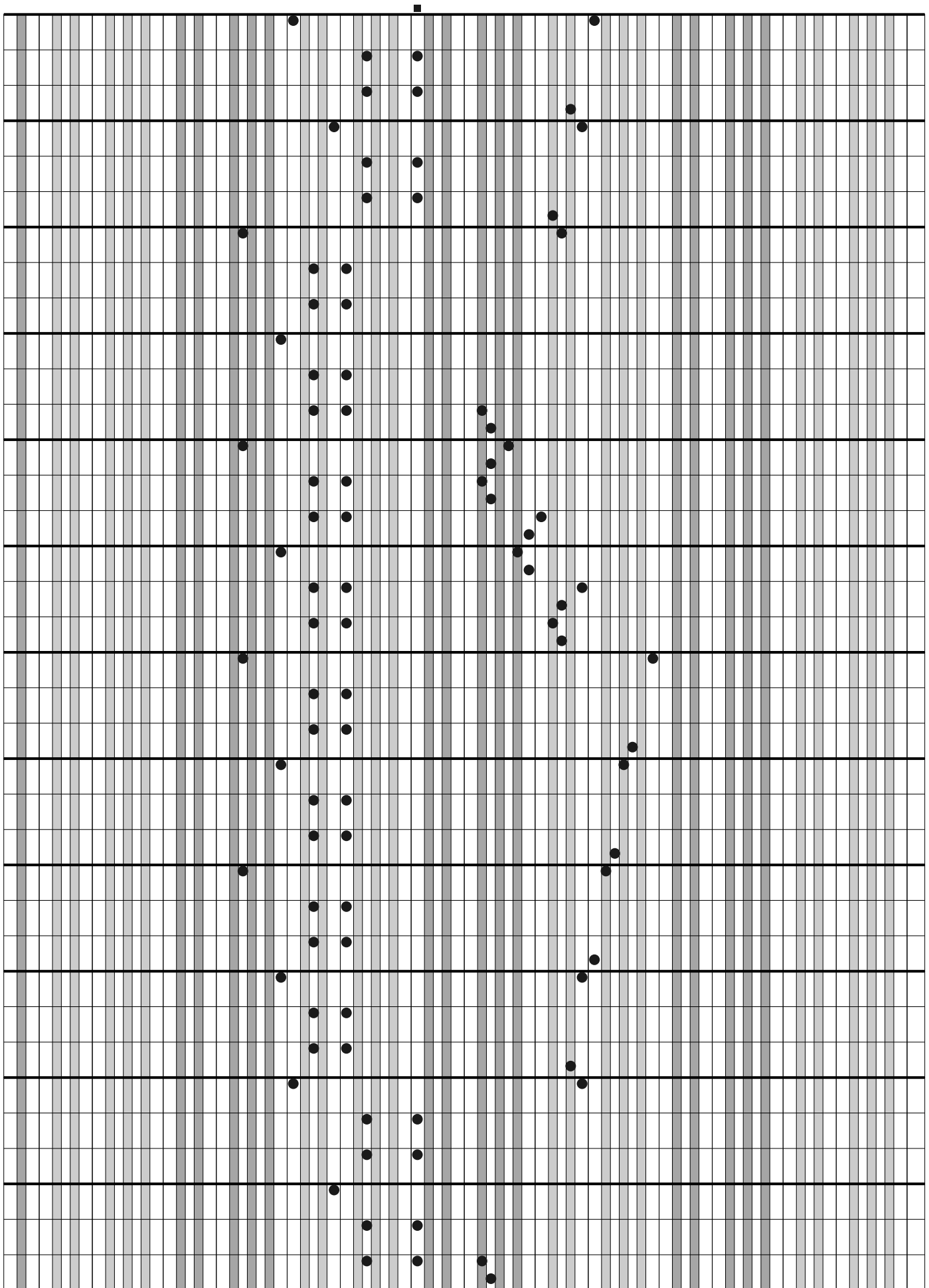
VALSA

Letra:

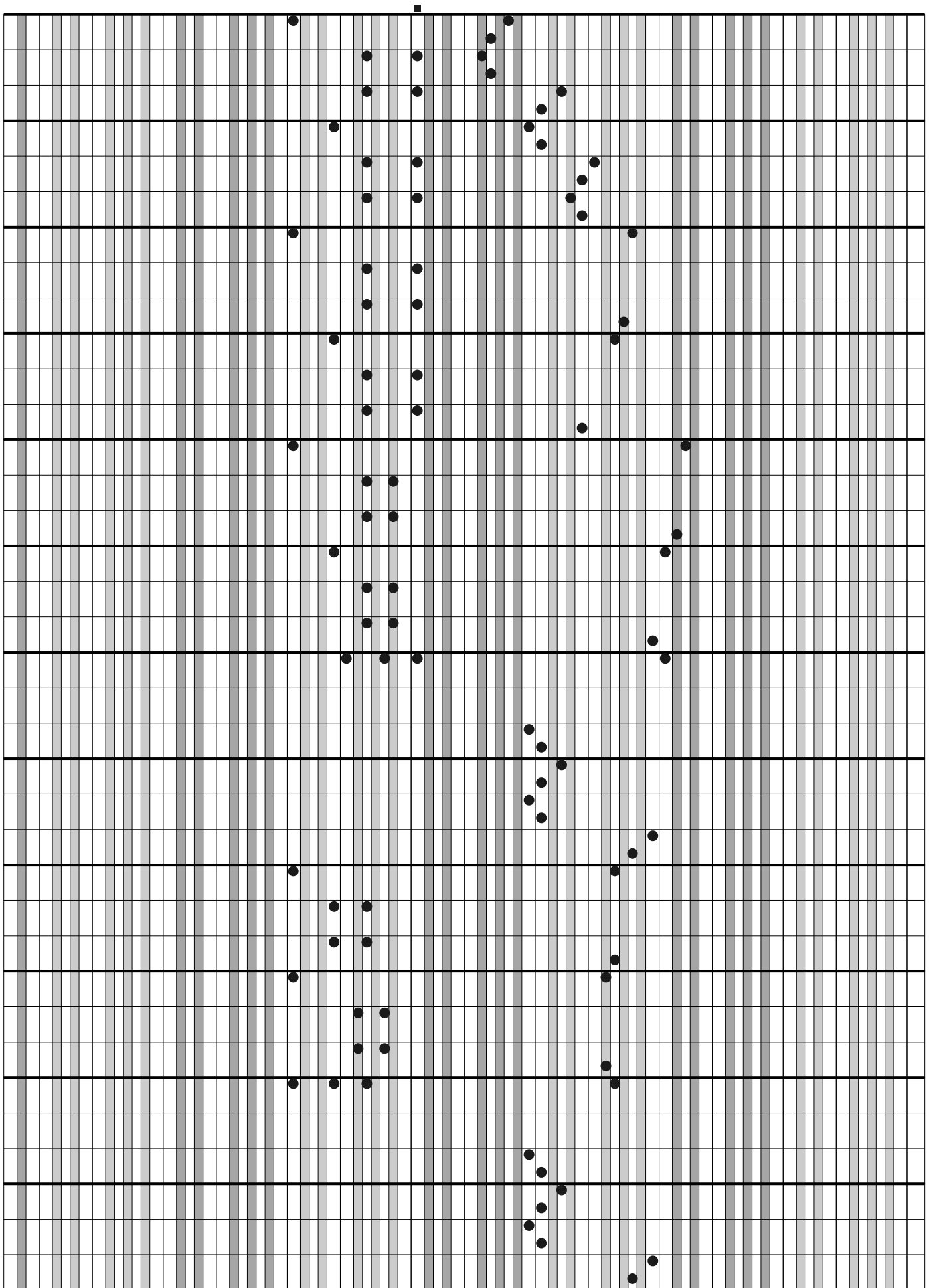
Música: J. STRAUSS

The image displays a musical score for the piece 'Vozes da Primavera' by Johann Strauss. The score is presented on a grid of 12 staves, each with a five-line structure. The notation is a form of musical shorthand, likely a simplified notation for a specific instrument, where notes are represented by black dots and stems. The music is in 3/4 time and marked 'Allegro 160'. The score begins with a key signature of one flat (B-flat) and a common time signature (C). The melody starts on a G4 note and moves through various intervals, including a sequence of eighth notes and a final descending eighth-note run. The accompaniment consists of vertical chords and stems, indicating harmonic support for the melody. The notation is clean and uses a consistent dot-and-stem system throughout.

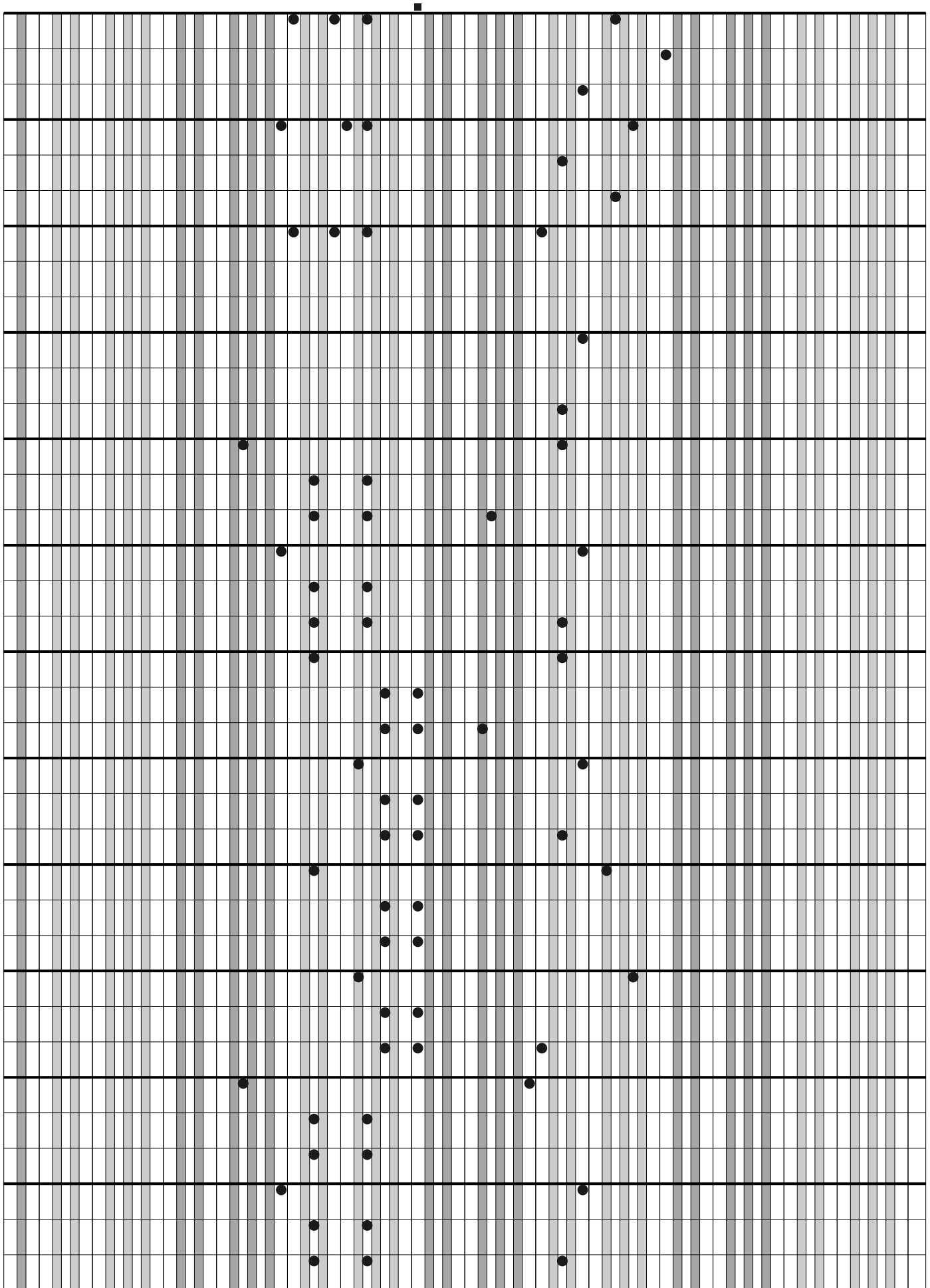
(continuação)



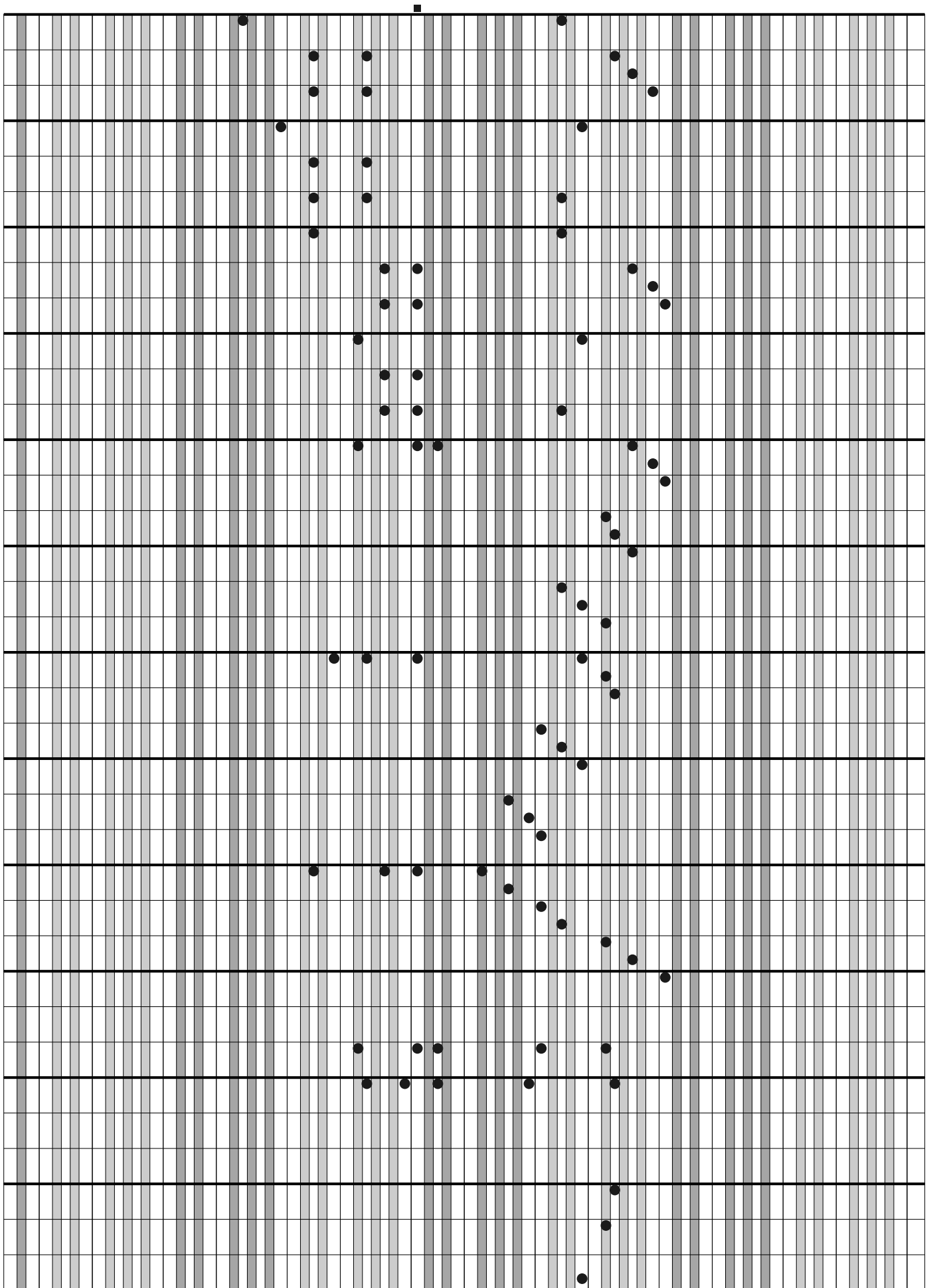
(continuação)



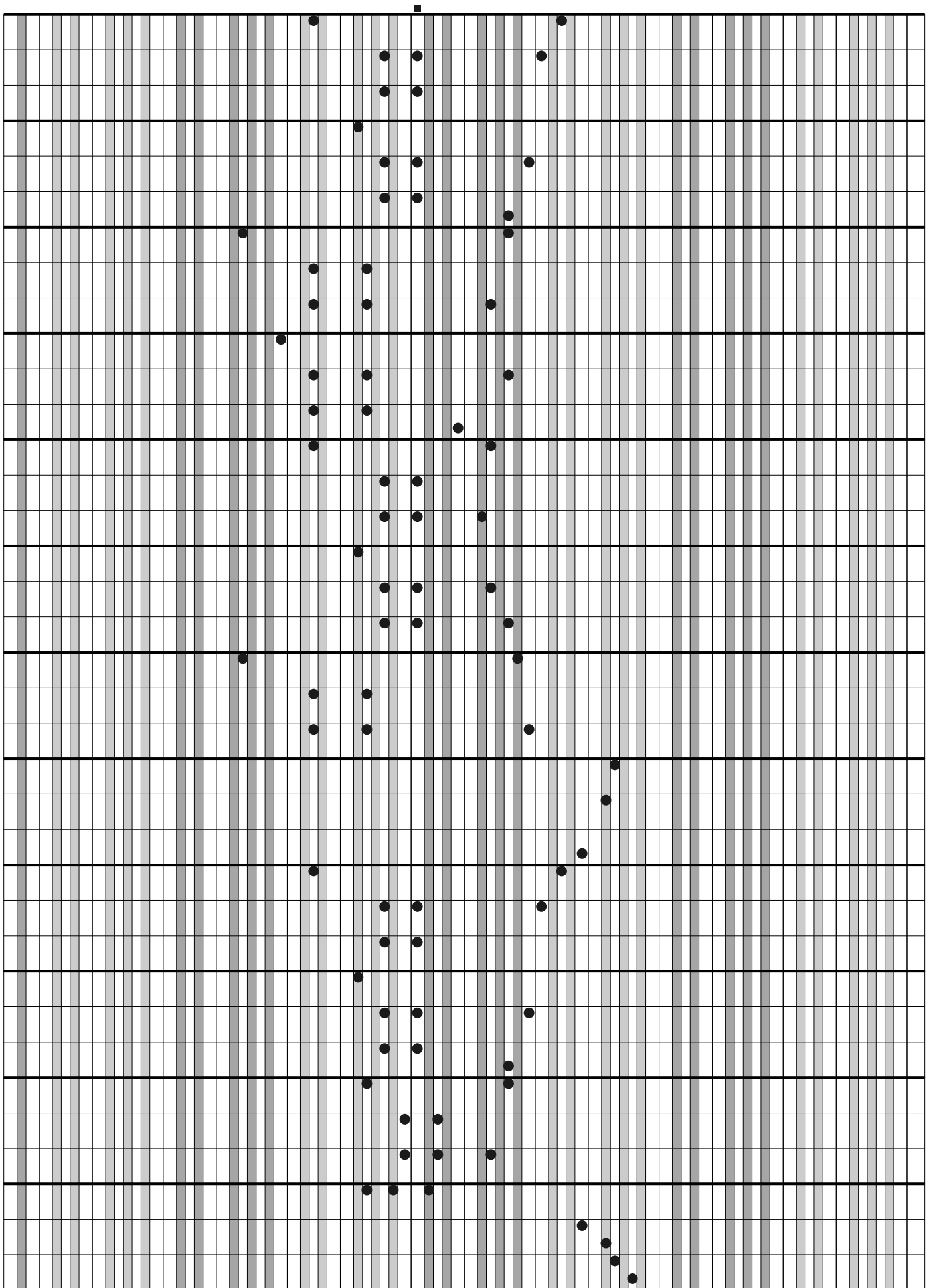
(continuação)



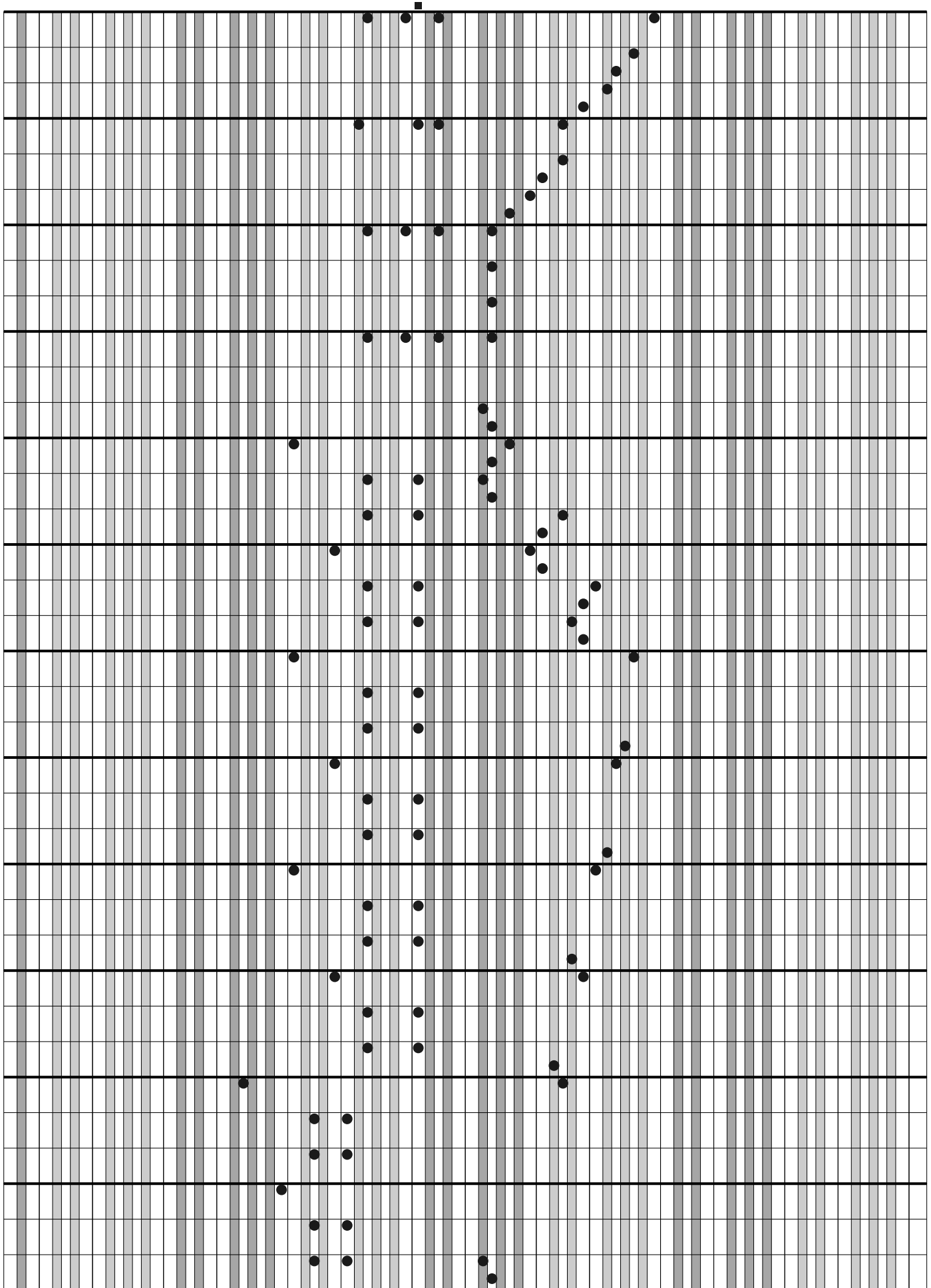
(continuação)



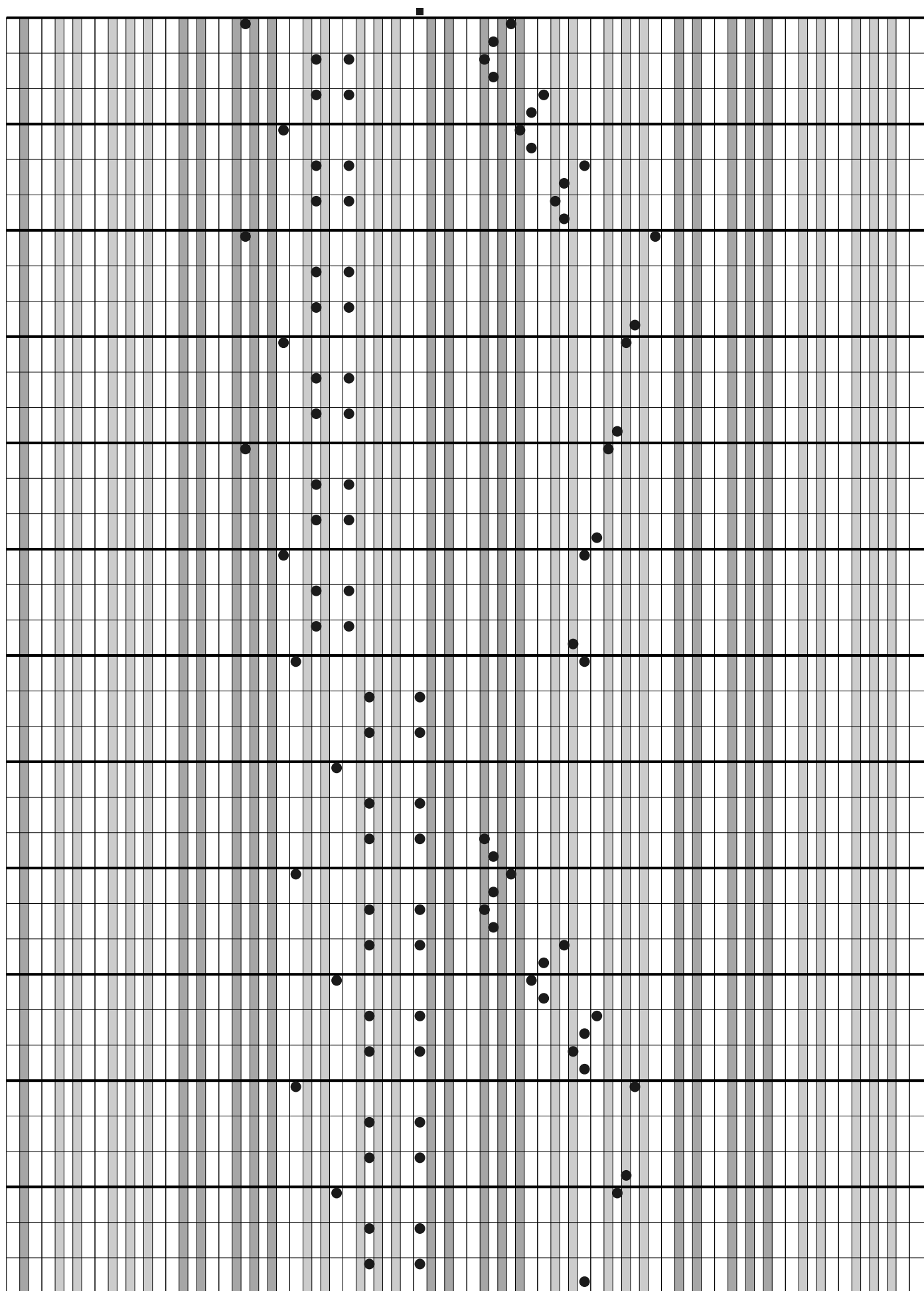
(continuação)



(continuação)



(continuação)





(continuação)

